

Baritone

พม่าดา

พระนิพนธ์ใน สมเด็จพระเจ้าฟ้าบรมพิตรสุริยมนตรี

ส่วนขึ้น ท่อน ๑

2

7

14

20

26

30

36

43

51

58

65

69

ພູມາຕາ
Baritone



ພູມາຕາ
Baritone



พม่าตา
Baritone

ส่วนขึ้น ท่อน ๒

Musical score for the first part of the song, 'ส่วนขึ้น ท่อน ๒'. The score is written in treble clef with a common time signature (C). It consists of seven staves of music. The first staff begins with a treble clef and a common time signature. The music features a mix of quarter, eighth, and sixteenth notes, with some rests. The second staff starts with a measure rest followed by eighth notes. The third staff begins with a measure rest followed by quarter notes. The fourth staff starts with a measure rest followed by quarter notes. The fifth staff begins with a measure rest followed by quarter notes. The sixth staff starts with a measure rest followed by quarter notes. The seventh staff begins with a measure rest followed by quarter notes and ends with a double bar line and a fermata.

ส่วนขึ้น ท่อน ๓

Musical score for the second part of the song, 'ส่วนขึ้น ท่อน ๓'. The score is written in treble clef with a common time signature (C). It consists of three staves of music. The first staff begins with a treble clef and a common time signature. The music features a mix of quarter, eighth, and sixteenth notes, with some rests. The second staff starts with a measure rest followed by quarter notes. The third staff begins with a measure rest followed by quarter notes and ends with a double bar line and a fermata.

พม่าตา
Baritone

ส่วนขึ้น ท่อน ๔

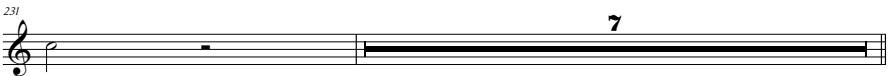
Musical score for Baritone, Part 4, measures 1-41. The score is written in treble clef with a key signature of one flat (B-flat). The tempo is marked 'Allegretto' and the time signature is 4/4. The score consists of nine staves of music. The first staff begins with a treble clef, a key signature of one flat, and a tempo marking of 'Allegretto'. The music is written in a single system. The score is divided into measures, with measure numbers 5, 10, 15, 20, 25, 30, 35, and 41 indicated at the beginning of their respective staves. The music features a variety of rhythmic patterns, including eighth and sixteenth notes, and rests. The final measure of the piece is a whole rest.

ພາວະ
Baritone

ສ່ວນ ຕົວ ອ

Musical score for Baritone part, measures 1-54. The score is written in treble clef with a key signature of one sharp (F#) and a common time signature (C). The music consists of several lines of notes and rests, with measure numbers 8, 15, 21, 25, 29, 33, 41, 48, and 54 indicated at the beginning of their respective lines. The notation includes various note values, rests, and dynamic markings.

ພູມາຕາ
Baritone



พม่าตา
Baritone

ส่วนที่ ๒



ส่วนที่ ๓



พม่าตา
Baritone

สองชั้น ร้อย ๔



สองชั้น ร้อย ๔



พม่าตา
Baritone

ขึ้นด้วย ร้อย ๐

5

9

16

23

29

36

41

46

53

58

63

พม่าตา
Baritone

ขึ้นด้วย ร้อย ๒



ขึ้นด้วย ร้อย ๓



ขึ้นด้วย ร้อย ๔



ขึ้นด้วย ร้อย ๕

